

SET 8-VIII-SCIENCE

S.N	Folder Number & Question Code	Topic	Question With Answers Options	Image (If Any)	Correct Answer (Option – A, B, C, D)				
1.	3_15 Science 3607	Chapter 7 Conservation of plants and animals	Your friend finds a plant with a vascular system and roots, but no seeds. You tell her it is a _____.		B				
						Answer Options			
						Option A	Option B	Option C	Option D
						moss	fern	gymnosperm	angiosperm
2.	3_15 Science 3615	Chapter 7 Conservation of plants and animals	Night-blooming flowers often LACK which of these?		A				
Answer Options									
Option A	Option B	Option C	Option D						
bright colours	strong scent	pollen grains	(nothing - they are no different from day-blooming flowers)						


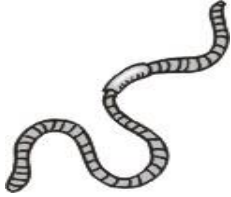


SET 8-VIII-SCIENCE

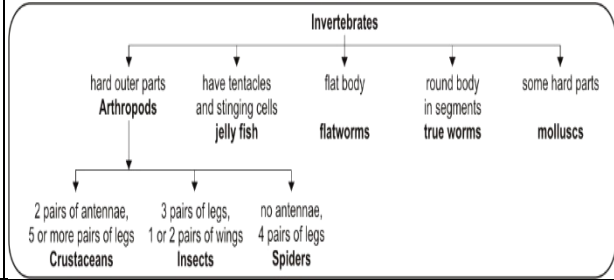
S.N	Folder Number & Question Code	Topic	Question With Answers Options	Image (If Any)	Correct Answer (Option – A, B, C, D)
3.	3_15 Science 3622	Chapter 7 Conservation of plants and animals	Which species was the first to become extinct?	<p>Answer the question with the information given in the diagram below. Letters P through Y represent different species of organisms.</p>	B
Answer Options					
Option A		Option B		Option C	
R		S		T	
Option D		Option C		Option D	
V		S		V	
S.N	Folder Number & Question Code	Topic	Question With Answers Options	Image (If Any)	Correct Answer (Option – A, B, C, D)
4.	3_15 Science 3623	Chapter 7 Conservation of plants and animals	Which species has managed to successfully remain unchanged through the years?	<p>Answer the question with the information given in the diagram below. Letters P</p>	B

SET 8-VIII-SCIENCE

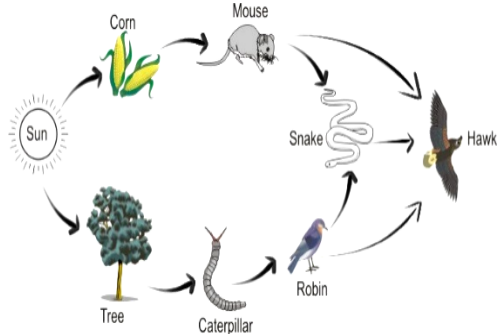
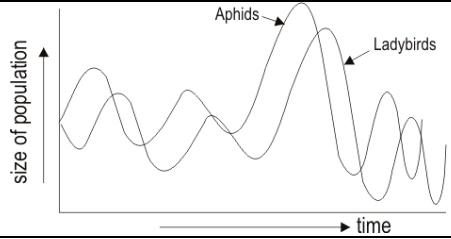
				through Y represent different species of organisms.													
<table border="1" style="width: 100%; border-collapse: collapse;"> <tr> <th colspan="4">Answer Options</th> </tr> <tr> <th style="width: 25%;">Option A</th> <th style="width: 25%;">Option B</th> <th style="width: 25%;">Option C</th> <th style="width: 25%;">Option D</th> </tr> <tr> <td style="text-align: center;">P</td> <td style="text-align: center;">Q</td> <td style="text-align: center;">U</td> <td style="text-align: center;">Y</td> </tr> </table>						Answer Options				Option A	Option B	Option C	Option D	P	Q	U	Y
Answer Options																	
Option A	Option B	Option C	Option D														
P	Q	U	Y														
S.N	Folder Number & Question Code	Topic	Question With Answers Options	Image (If Any)	Correct Answer (Option – A, B, C, D)												
5.	3_16 Science 2459	Chapter 7 Conservation of plants and animals	Most flowers bloom in the day and are brightly coloured. Compared to day-blooming flowers, it is likely that night-blooming flowers _____.		B												
<table border="1" style="width: 100%; border-collapse: collapse;"> <tr> <th colspan="4">Answer Options</th> </tr> <tr> <th style="width: 25%;">Option A</th> <th style="width: 25%;">Option B</th> <th style="width: 25%;">Option C</th> <th style="width: 25%;">Option D</th> </tr> <tr> <td style="text-align: center;">are brighter but not so strongly scented</td> <td style="text-align: center;">are not as bright but more strongly scented</td> <td style="text-align: center;">are not as bright and not so strongly scented</td> <td style="text-align: center;">(follow no comparable pattern of brightness or scentedness)</td> </tr> </table>						Answer Options				Option A	Option B	Option C	Option D	are brighter but not so strongly scented	are not as bright but more strongly scented	are not as bright and not so strongly scented	(follow no comparable pattern of brightness or scentedness)
Answer Options																	
Option A	Option B	Option C	Option D														
are brighter but not so strongly scented	are not as bright but more strongly scented	are not as bright and not so strongly scented	(follow no comparable pattern of brightness or scentedness)														
S.N	Folder Number & Question Code	Topic	Question With Answers Options	Image (If Any)	Correct Answer (Option – A, B, C, D)												

SET 8-VIII-SCIENCE

6.	3_17 Science 1881	Chapter 7 Conservation of Plants and Animals	Among the following which would classify as a jellyfish?	Look at the flow chart given below and answer the question.	A
Answer Options					
		Option A	Option B	Option C	Option D
					
S.N	Folder Number & Question Code	Topic	Question With Answers Options	Image (If Any)	Correct Answer (Option – A, B, C, D)



SET 8-VIII-SCIENCE

7.	3_17 Science 1898	Chapter 7 Conservation of Plants and Animals	The pesticide DDT accumulates in the fatty tissue of animals and is transferred along food chains. DDT's concentration increases along each link of the food chain. Which of the following organisms in the food web would accumulate the highest concentration of DDT?	Look at the food web given here and answer the question. 	D										
		<table border="1" style="width: 100%; border-collapse: collapse;"> <thead> <tr> <th colspan="4">Answer Options</th> </tr> <tr> <th style="width: 25%;">Option A</th> <th style="width: 25%;">Option B</th> <th style="width: 25%;">Option C</th> <th style="width: 25%;">Option D</th> </tr> </thead> <tbody> <tr> <td style="text-align: center;">corn</td> <td style="text-align: center;">mouse</td> <td style="text-align: center;">snake</td> <td style="text-align: center;">Hawk</td> </tr> </tbody> </table>				Answer Options				Option A	Option B	Option C	Option D	corn	mouse
Answer Options															
Option A	Option B	Option C	Option D												
corn	mouse	snake	Hawk												
S.N	Folder Number & Question Code	Topic	Question With Answers Options	Image (If Any)	Correct Answer (Option – A, B, C, D)										
8.	3_17 Science 1903	Chapter 7 Conservation of Plants and Animals	The graph given shows the population of two species ladybirds and aphids over time. Which of these appears to be a possibility based on this graph?		A										
		<table border="1" style="width: 100%; border-collapse: collapse;"> <thead> <tr> <th colspan="4">Answer Options</th> </tr> <tr> <th style="width: 25%;">Option A</th> <th style="width: 25%;">Option B</th> <th style="width: 25%;">Option C</th> <th style="width: 25%;">Option D</th> </tr> </thead> <tbody> <tr> <td style="text-align: center;"> </td> <td style="text-align: center;"> </td> <td style="text-align: center;"> </td> <td style="text-align: center;"> </td> </tr> </tbody> </table>				Answer Options				Option A	Option B	Option C	Option D		
Answer Options															
Option A	Option B	Option C	Option D												

SET 8-VIII-SCIENCE

		Ladybirds probably feed on aphids	Aphids probably feed on ladybirds	Ladybirds and aphids do not feed on each other	Nothing can be said about them based on this	
S.N	Folder Number & Question Code	Topic	Question With Answers Options	Image (If Any)		Correct Answer (Option – A, B, C, D)
9.	4_23 Science 9081	Chapter 7 Conservation of plants and animals	The Wildlife Institute of India survey reveals that 70-80% of individual freshwater marshes and lakes in the Gangetic plains have been lost in the last five decades. At present only 50% of India's wetlands remain. Which of the following is a NOT a cause for the disappearance of wetlands?			C
Answer Options						
		Option A	Option B	Option C	Option D	
		Increasing urbanization and industrialisation	Increased tree-cutting and deforestation	Increase in migratory bird population	Recovery of marsh land for agriculture	

SET 8-VIII-SCIENCE

S.N	Folder Number & Question Code	Topic	Question With Answers Options	Image (If Any)	Correct Answer (Option – A, B, C, D)											
10.	4_23 Science 9097	Chapter 7 Conservation of Plants and Animals	Use the information given in the picture and answer the following question. Which among the following statements is a VALID conclusion?		C											
		<table border="1" style="width: 100%; border-collapse: collapse;"> <thead> <tr> <th colspan="4" style="text-align: center;">Answer Options</th> </tr> <tr> <th style="width: 25%;">Option A</th> <th style="width: 25%;">Option B</th> <th style="width: 25%;">Option C</th> <th style="width: 25%;">Option D</th> </tr> </thead> <tbody> <tr> <td style="text-align: center;">The total energy intake by each of these animals is the same.</td> <td style="text-align: center;">A mouse needs more energy for growth and reproduction than a cow.</td> <td style="text-align: center;">For these animals, the undigested component is more than that used for growth/reproduction.</td> <td style="text-align: center;">A Grasshopper uses a very small part of the energy from digested food for respiration.</td> </tr> </tbody> </table>				Answer Options				Option A	Option B	Option C	Option D	The total energy intake by each of these animals is the same.	A mouse needs more energy for growth and reproduction than a cow.	For these animals, the undigested component is more than that used for growth/reproduction.
Answer Options																
Option A	Option B	Option C	Option D													
The total energy intake by each of these animals is the same.	A mouse needs more energy for growth and reproduction than a cow.	For these animals, the undigested component is more than that used for growth/reproduction.	A Grasshopper uses a very small part of the energy from digested food for respiration.													
11.	4_23 Science 9110	Chapter 7 Conservation of Plants and Animals	A desert is a region that receives very little rainfall. Not all deserts are hot - cold deserts occur in temperate regions at high latitudes.		C											

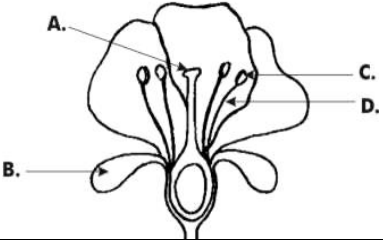
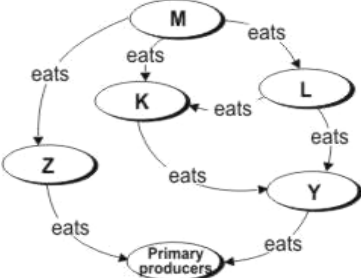
SET 8-VIII-SCIENCE

		<p>Which of the following temperature - rainfall graphs corresponds to a desert? [In these graphs the line refers to the temperature and the bars refer to the rainfall]</p>																												
Answer Options																														
Option A		Option B		Option C		Option D																								
12.	<p>4_23 Science</p> <p>9116</p>	<p>Chapter 7 Conservation of Plants and Animals.</p>	<p>Study the flowchart shown and also see the four types of leaves marked P, Q, R and S. Which of these correctly identifies them?</p>	<table border="1" style="border-collapse: collapse; width: 100%;"> <thead> <tr> <th style="width: 5%;"></th> <th style="width: 20%;">Alternate simple</th> <th style="width: 20%;">Alternate compound</th> <th style="width: 20%;">Opposite simple</th> <th style="width: 20%;">Opposite compound</th> </tr> </thead> <tbody> <tr> <td style="text-align: center;">A</td> <td style="text-align: center;">P</td> <td style="text-align: center;">Q</td> <td style="text-align: center;">R</td> <td style="text-align: center;">S</td> </tr> <tr> <td style="text-align: center;">B</td> <td style="text-align: center;">Q</td> <td style="text-align: center;">P</td> <td style="text-align: center;">S</td> <td style="text-align: center;">R</td> </tr> <tr> <td style="text-align: center;">C</td> <td style="text-align: center;">Q</td> <td style="text-align: center;">S</td> <td style="text-align: center;">R</td> <td style="text-align: center;">P</td> </tr> <tr> <td style="text-align: center;">D</td> <td style="text-align: center;">P</td> <td style="text-align: center;">S</td> <td style="text-align: center;">Q</td> <td style="text-align: center;">R</td> </tr> </tbody> </table>		Alternate simple	Alternate compound	Opposite simple	Opposite compound	A	P	Q	R	S	B	Q	P	S	R	C	Q	S	R	P	D	P	S	Q	R	D
	Alternate simple	Alternate compound	Opposite simple	Opposite compound																										
A	P	Q	R	S																										
B	Q	P	S	R																										
C	Q	S	R	P																										
D	P	S	Q	R																										

SET 8-VIII-SCIENCE

Answer Options					
Option A		Option B		Option C	
A		B		C	
A		B		D	
13.	4_24 Science 10308	Chapter 7 Conservation of Plants and Animals.	Which of the following body parts is most likely to help a mammal in camouflaging itself from its enemies?	D	
Answer Options					
Option A		Option B		Option C	
Eyes		Nails		Heart	
Eyes		Nails		Fur	

SET 8-VIII-SCIENCE

S.N	Folder Number & Question Code	Topic	Question With Answers Options	Image (If Any)	Correct Answer (Option – A, B, C, D)	
14.	4_24 Science 10314	Chapter 7 Conservation of Plants and Animals.	The cross section of a flower is shown below. Which letter correctly represents the part of the flower where the pollen grains are transferred?		A	
		Answer Options				
		Option A	Option B	Option C	Option D	
		A	B	C	D	
S.N	Folder Number & Question Code	Topic	Question With Answers Options	Image (If Any)	Correct Answer (Option – A, B, C, D)	
15.	4_24 Science 10318	Chapter 7 Conservation of Plants and Animals.	K and L are likely to be	Observe the food web shown below and answer the question.		B
		Answer Options				
		Option A	Option B	Option C	Option D	
		Organisms that feed on	Organisms that feed on	Organisms that feed	Non-living objects.	

SET 8-VIII-SCIENCE

		plants.	other animals.	on plants as well as animals.		
--	--	---------	----------------	-------------------------------	--	--